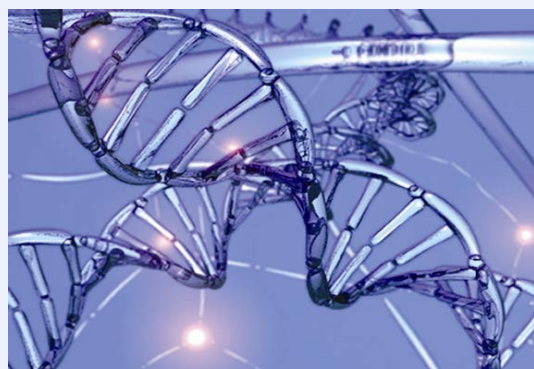


Charles A. King Trust

Postdoctoral Research Fellowship Program

U.S. TRUST 
Bank of America Private Wealth Management

BANK OF AMERICA, N.A., EDWARD DANE AND LUCY WEST, CO-TRUSTEES



APPLY NOW to the 2017 Postdoctoral Research Fellowship Program in the Basic Sciences and Clinical/Health Services Research.

The primary goal of the Program is to provide fellowships to postdoctoral fellows in Massachusetts to investigate the causes of diseases in human beings, and/or improve methods of treatment for human diseases. United States citizenship is not required.

DEADLINE

Friday, February 10, 2017
3:00 P.M., U.S. Eastern Time

FUNDING PERIOD

September 1, 2017 – August 31, 2019

AWARD AMOUNT

Two-year grants range from \$87,400 to \$106,350

GUIDELINES

www.hria.org/tmf/King

ELIGIBILITY

Basic Science

By September 1, 2017, applicants must have completed a minimum of three years, but not more than five years, of full-time postdoctoral research. **See Guidelines for additional eligibility requirements.**

Clinical/Health Services Research

By September 1, 2017, applicants must have no more than five years of employment since completion of residency training or 3-5 years of postdoctoral employment. **See Guidelines for additional eligibility requirements.**

Private foundations, individuals and other contributors have joined the Charles A. King Trust in supporting the Postdoctoral Research Fellowship Program. Proposals focused on cancer, blindness (not visual impairment), or child health are highly encouraged due to the availability of dedicated fellowships supported by the generous funding contributed respectively from the Sara Elizabeth O'Brien Trust, Bank of America, N.A., Trustee, the Simeon J. Fortin Charitable Foundation, Bank of America, N.A., Trustee, and the Charles H. Hood Foundation.



The Medical Foundation
Health Resources in Action

The Charles A. King Trust Postdoctoral Research Fellowship Program is administered by The Medical Foundation. Please direct questions to EJohnstone@hria.org.