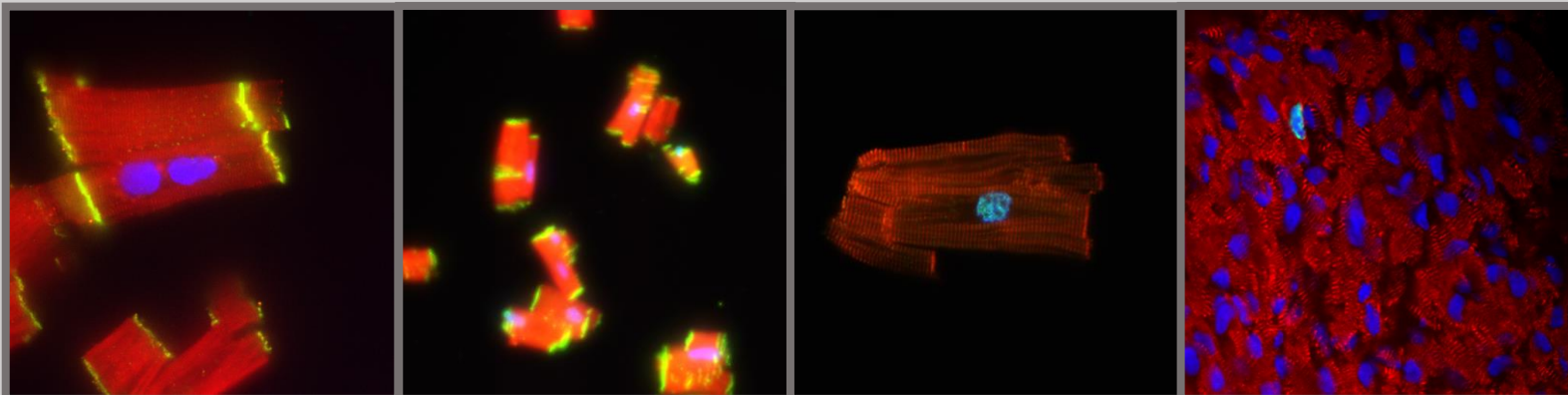


Harold S. Geneen Charitable Trust Awards Program for Coronary Heart Disease Research

2021 Grant Cycle



Application Deadline:

Wednesday, July 15, 2020
(by 12:00 P.M. ET)

Award Amount:

Two-year Awards of \$275,000
(inclusive of 10% indirects)
Year 1: \$150,000
Year 2: \$125,000

Funding Period:

January 1, 2021 –
December 31, 2022

Application Materials:

<https://hria.org/tmf/Geneen>

Questions:

Jeanne Brown
Director of Grantmaking
jbrown@hria.org
(617) 279-2255

Program Focus and Overview:

The Harold S. Geneen Charitable Trust Awards Program for Coronary Heart Disease Research supports research in the area of the prevention of coronary heart disease or circulatory failure, and improving care for these patients. The Program focuses on basic and translational scientific research. Clinical studies are currently ineligible.

In response to the COVID-19 pandemic, applications examining the intersection of coronary heart disease and/or congestive heart failure and COVID-19 or similar viral illnesses are highly encouraged and will be given special consideration.

Eligibility:

In accordance with Mr. Geneen's directives, the Program supports smaller, mid-sized institutions. **Each invited institution may only submit one application from a full-time faculty member.** Junior faculty and those with less than \$500,000 in direct costs funding at the time of application, are encouraged to apply. United States citizenship is not required.

Invited Institutions:

- Brown University Warren Alpert Medical School
- Dartmouth College Geisel School of Medicine
- Mayo Medical School
- University of Arizona College of Medicine
- University of California – Davis
- University of California – Irvine
- University of Chicago Pritzker School of Medicine
- University of Connecticut School of Medicine
- University of Kentucky College of Medicine
- University of New Mexico School of Medicine
- University of Rochester School of Medicine and Dentistry
- University of Utah School of Medicine
- University of Vermont College of Medicine
- Wake Forest School of Medicine